

KENT ZOOM TURBO VACUUM CLEANER

KENT
Cyclonic
Vacuum Cleaners
HOUSE of PURITY

KENT
Cyclonic
Vacuum Cleaners
HOUSE of PURITY

Instruction Manual



*Cordless
Hoseless
Rechargeable*



Digital Control Panel

Imported & Marketed by:
KENT RO SYSTEMS LTD.
E-6, 7 & 8, Sector-59, Noida, U.P.-201 309, India.

For customer complaints, contact our Customer Care Officer at:
E-6, 7 & 8, Sector-59, Noida, U.P.-201 309, India. Call: 92-789-12345
E-mail: service@kent.co.in or visit us at www.kent.co.in

Made in People's Republic of China




CYCLONES Technology

**>28 kPa High Suction
Low Noise BLDC Motor**

Welcome to KENT



Dear Customer,

At the outset, allow us to thank you for your trust in KENT Zoom Turbo Vacuum Cleaner. At KENT, we take pride in our reputation for product quality and industry proven performance. We are certain that your decision to own a KENT Zoom Turbo Vacuum Cleaner will go a long way towards keeping you and your family in good health. We are confident that you will be more than satisfied with its performance and that it will serve your need for safer and cleaner living without any compromise.

This manual would help you in getting the best out of your KENT Zoom Turbo Vacuum Cleaner. Please go through the booklet to familiarize yourself with operation and maintenance.

You can look forward to years of trouble-free service. In case you require any further information, please contact your nearest KENT dealer / branch.

Happy Cleaning!

KENT RO Systems Ltd.

Table of Contents

1. Introduction.....	1
2. Features of KENT Zoom Turbo Vacuum Cleaner.....	1
3. Know your Product.....	1
4. Attached Accessories.....	2
5. Items in the Box.....	2
6. Assembling.....	2-3
7. Using the KENT Zoom Turbo Vacuum Cleaner.....	3
8. Using the Accessories.....	3
9. Cleaning and Maintenance.....	5
10. Wall Mounting.....	6
11. Charging.....	7
12. Important Instructions.....	8
13. General Safety Instructions.....	8
14. Technical Specifications.....	9

Introduction

We at KENT have always believed that a clean and healthy life is a right of every individual. This ethos made us embark on the journey to develop innovative solutions for cleaning water we drink, fruits & vegetable we eat, and the air we breathe. Using innovative technology supported by a proficient service network, we have been able to create a brand which has become synonymous for well being and health.

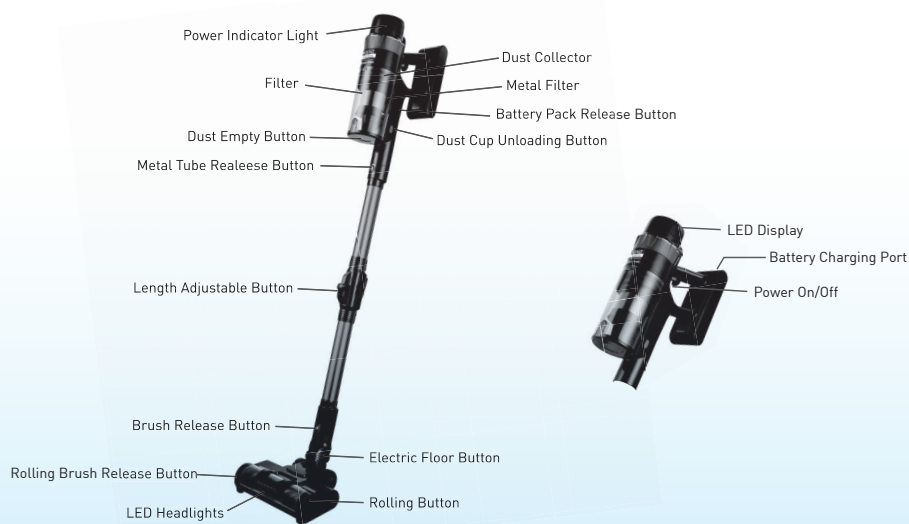
Continuing with the tradition, we now present the KENT Zoom Turbo Vacuum Cleaner, with futuristic and state-of-the-art Cyclonic technology and to provide clean, dust-free, and spotless surroundings.

In KENT Zoom Turbo Vacuum Cleaner, the air and dust are sucked at high-speed, creating a fast-spinning vortex while the dust is separated in a detachable cylindrical collection vessel or bin. The BLDC Motor in KENT Zoom Turbo Vacuum Cleaner ensures low noise operation.

Features of KENT Zoom Turbo Vacuum Cleaner

1. BLDC Motor ensures low noise operation.
2. Multifunctional Vacuum Cleaner cleans floor, curtains, carpets, etc.
3. More hygienic cleaning than sweeping.
4. It works for 60 minutes in smart mode after being fully charged.
5. Cordless vacuum cleaner ensures convenient & fast operation.
6. Bag-less design.
7. Efficient filter reduces the air pollution.
8. Lightweight ABS body & easy to handle.

Know Your Product



1

Attached Accessories



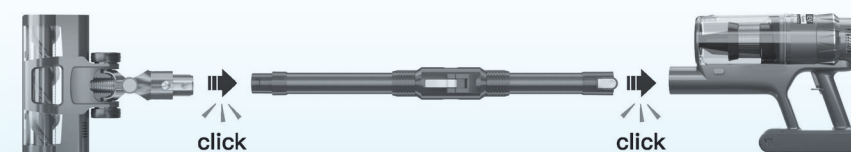
1. Crevice Nozzle
2. 2-in-1 Crevice Tool
3. Main Engine
4. Electric Floor Brush
5. Wall Bracket
6. Power Adapter
7. Filter
8. Adjustable Metal Tube

Items in the Box

- | | |
|-----------------------------------|------|
| 1. KENT Zoom Turbo Vacuum Cleaner | : 1N |
| 2. Mainframe | : 2N |
| 3. Detachable Battery Pack | : 1N |
| 4. Bendable Tube | : 1N |
| 5. Electric Brush | : 1N |
| 6. 2-in-1 Crevice Tool | : 1N |
| 7. Long Nozzle | : 1N |
| 8. Wall Hanger | : 1N |
| 9. Adapter | : 1N |
| 10. User Manual | : 1N |

Assembling

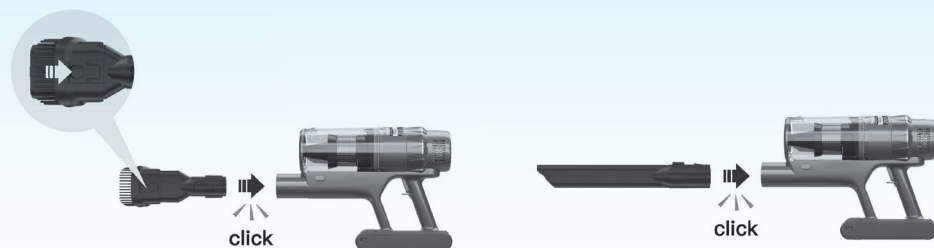
For using Motorized Floor/Carpet Brush



- Attach different accessories for different tasks as illustrated.
- Install Vacuum Cleaner in the right direction to avoid airflow issues or not working.

2

For using 2-in-1 Crevice Tool



Using your KENT Zoom Turbo Vacuum Cleaner

1. First attach the required accessory with the main unit.
2. Press the power button.

Note: Please ensure that the power supply is sufficient and also the dust collector and filters are cleaned, dried and fixed in place.

3. Select the suction level on the digital screen as per requirement.
4. LED headlights will be turned on while using.
5. The digital control panel will indicate the battery level, suction setting and mode.

Using the Accessories

1. The Motorized Floor/Carpet Brush can be used for cleaning both hard floors and carpet, and it can also up to 180° for better reach under furniture.
2. The 2-in-1 Crevice Tool is ideal for cleaning surfaces that are difficult to clean otherwise, such as radiators, couch corners and cushion edges.
3. The Crevice Nozzle is ideal for cleaning sofas, curtains and other furniture.



[1] Strong Suction Power

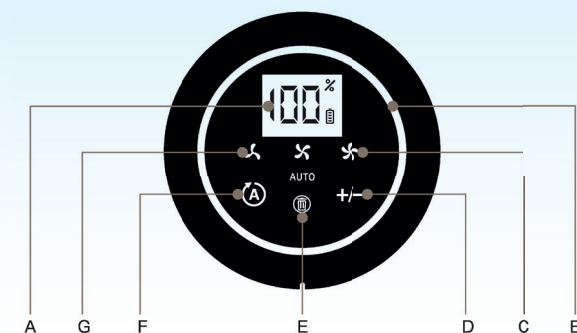


[2] Reaches The Most Difficult Corners Of Your Home



[3] Separate Nozzle to Clean Curtains

Digital Control Panel Operation



- | | |
|------------------------------------|--------------------------------|
| A: Remaining battery power | E: Filter replacement reminder |
| B: Ambient light Indicator | F: Auto Mode button |
| C: Suction level indicator light | G: Auto Mode Indicator |
| D: Suction level adjustment button | |



When charging continuously, the ambient light is green and will change the power. The "100%" will flash at the same time. After fully charged, the ambient light is completely on, and the "100%" is always on.



When the ambient light is yellow and is "100%" is red, it means the filter is clogged. Please clean the filter and cyclone separator frame, or replace a new filter, and restart the machine to solve the abnormal problem.



Press the switch button on the handle, and enable the Auto Mode default, which will turn the ambient light to blue. In Auto Mode, V3 adjusts the suction power according to the degree of dirt on the ground, and the ambient light gradually turns red with the increasing amount of dust.



Touch "+/-" on the panel to switch to the "low", "medium" and "A" gears in turn, and the ambient light is green, blue, and yellow respectively. Touch "A" to switch to Auto Mode.

Cleaning and Maintenance

1. Dust Cup Cleaning

- Please make sure the dust collector is aligned.
- Do not tilt the filter when it is in operation.



Press the dust collector release button to empty.



Press and hold the dust cup release button and lift the dust cup.



Remove the filter cotton.



Take over the filter and metal filter from dust cup.



Clean the dust cup by using a damp cloth with a mild detergent.



Air dry before placing back in the vacuum cleaner.

2. Filter Cleaning

- Never operate vacuum without all filters.
- Wash filter with cold water at least every month.



Remove the filter cotton.



Take over the filter and metal filter from dust cup.

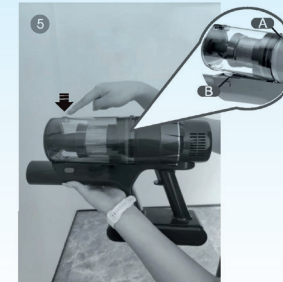


Clean with water and a mild detergent.

5



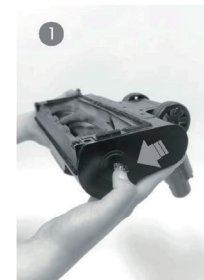
Air dry the cotton filter and metal filter until completely dry before placing back in the vacuum cleaner.



Align point A first, then point B. Press down the dust box and hear a click to complete the installation.

3. Clean the Rolling Brushes

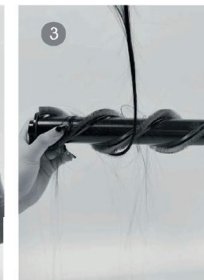
- Make sure the power is off.
- Do not use sharp tools when cleaning the rolling brush to avoid damage.



Press the rolling brush release button and open it up.



Take out the rolling brush.



Remove the cords and hairs on it.

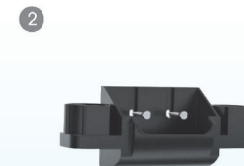


Put the brush back and fix it in position.

Wall Mounting



Measure the distance between the bracket holes first.



Drill two holes as measured width, secure the backplate using the appropriate fixings.



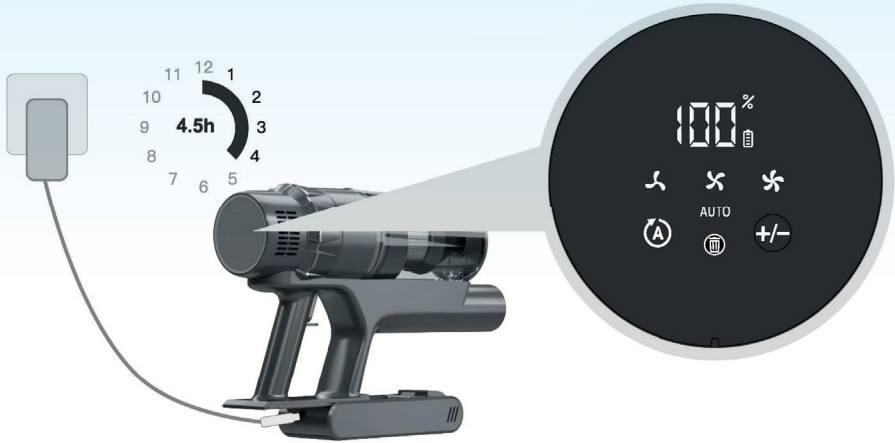
Align the vacuum cleaner and the two suction heads with card holes of the bracket, and hang them.

The package contains adhesive pads that can be used to install the bracket, but it is recommended to use screws to fix it more firmly.

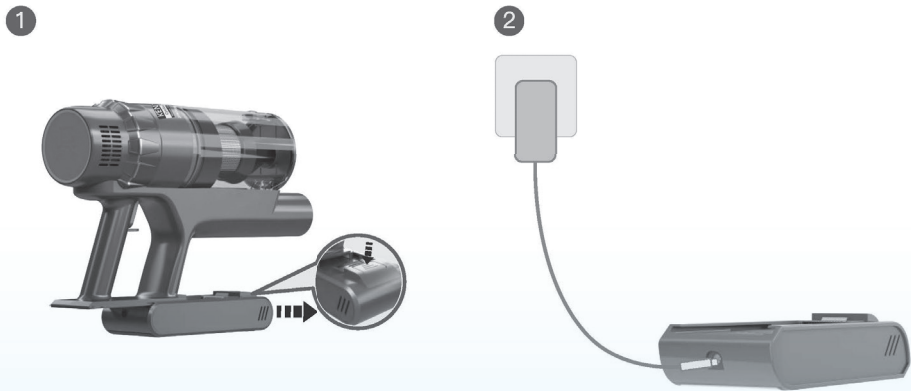
6

Charging

1. Machine Charging



2. Charge the Battery Separately After Taking It Out



- Unplug power adaptor when fully charged. The battery is charged separately without indicator lights.

When fully charged it will operate accordingly

Mode	Operation time
Strong mode	≥ 12 minutes
Standard mode	≥ 28 minutes
Low mode	≥ 36 minutes
Smart mode	≥ 60 minutes

Important Instructions

Please avoid below actions (to prevent leakage, overheat, fire, electric shock, and etc):

- This product contains Li-ion batteries which are intended for use in this product only. Please do not use them in other products.
- Please only use the power adaptor included in the package.
- Please do not throw this product into fire.
- Please do not attempt to disassemble, repair, or modify this product.
- Please do not recharge, use, or store this product near fire or in a high temperature environment.

General Safety Instructions

When using KENT Zoom Turbo Vacuum Cleaner, basic precaution should always be followed, avoid the following:


- Dragging the floor head in horizontal direction.
- Continue using the floor head when it's wheels or other connected parts are damaged.
- Pulling or stretching the power cable.
- Please avoid direct sunshine, or store near heat or fire.
- Please store this product in a clean, dry area.
- Please turn off the vacuum and take off the floor brush before cleaning it.
- Please do not use the open end of the extension tube to vacuum directly on any surface.
- Please do not block the air outlet to avoid overheating.
- Please do not keep the unit running if the air passage is blocked.
- Please do not play with the power plug.

Note: Auto-protection

The following situation will trigger the auto-protection mechanism, and turn off the power automatically to prevent motor from overheating:

- When the dust cup is full.
- When the air passage is blocked.
- When the beater bar is tangled with hair, fabric, or other material.

Technical Specifications

Product Name	KENT Zoom Turbo Vacuum Cleaner
Product Code	116148
Product Generic Name	Vacuum Cleaner
Net Weight	2.92 kg
Input Power Supply	Single Phase 220-240 V AC, 50-60 Hz. 
Max. Vacuum Pressure	≥ 28 kPa
Noise	< 75 dB
Maximum Power	500 W
Working Time	60 mins. (Smart Mode)
Dust Capacity	0.6 L

WARRANTY CARD

Product: **KENT Zoom Turbo Vacuum Cleaner**

Product Code: 116148

Serial No.: Dealer Stamp:

Customer Details:

Customer's Name:

Customer's Address:

Customer's Phone No.:

Warranty Details:

Invoice Date: Invoice No.:



Imported & Marketed by: **KENT RO SYSTEMS LTD.**

E-6, 7 & 8, Sector-59, Noida, U.P.-201 309, India.

E-mail: service@kent.co.in | Website: www.kent.co.in | Customer Care: 92-789-12345

TERMS & CONDITIONS OF WARRANTY

KENT warrants all new products manufactured by it to be free from defects in material and workmanship under normal usage and service from the date of purchase as under:

1. The Warranty period commences from the date of purchase by the first end-user. During this Warranty period of one year, KENT or its Authorised Service Provider (ASP) will replace or repair any part of KENT Zoom Turbo Vacuum Cleaner, that in the opinion of KENT or its ASP, would be defective in operation due to faulty material or workmanship (i.e. manufacturing defects) with the exception of consumables.
2. The product's plastic body is not covered under Warranty and hence, it must be handled with care to guard against breakage.
3. The original purchaser of the unit can avail services under Warranty at the point of sale by producing the damaged part(s) along with the original invoice.
4. This Warranty is void if the unit is not operated under normal conditions or according to the instructions given in the manual.
5. Product returned to KENT or its ASP for Warranty examination must be shipped freight prepaid.
6. KENT or its ASP shall not be held liable for claims exceeding the cost of repair of the defects in workmanship.
7. This Warranty Agreement shall not be interpreted to render KENT or its ASP liable for injuries or damages of any kind - direct, consequential or contingent to persons or property.
8. KENT or its ASP shall not be held responsible by representative or buyer for failure to abide by any of the obligations of this Warranty Agreement, if such failures are the result of circumstances of Forces Majeure such as (but not limited to), floods, earthquakes, transportation strikes, labour disputes with outside suppliers or any other conditions beyond the control of KENT or its ASP.
9. KENT or its ASP shall not be held liable for repair or alterations made without prior written approval for product failures resulting from the lack of proper maintenance.
10. This Warranty Agreement excludes all products/component parts or damage to any part of this KENT Zoom Turbo Vacuum Cleaner which in the opinion of KENT or its ASP have been subjected to misuse; misapplication; negligence; alteration; accident or operation contrary to our instructions. Incompatibility with accessories not installed by KENT or its ASP, or that have been repaired with component parts other than those manufactured by or obtained from KENT or its ASP. Damage caused by freezing, flood, fire or Act of God is not covered by this Warranty. In all such cases, regular charges will apply. This limited Warranty does not include service to diagnose a claimed malfunction in this unit.
11. KENT reserves the right to alter or improve design and specifications at any time, without any contingent obligations to prospective buyers or owners of the products previously sold.
12. Any disagreements and obligations based upon the purchase of KENT products and thereby imposed on KENT or its ASP shall be governed by and construed according to the laws of INDIA and subject to the jurisdiction of Delhi Courts only.
13. KENT or its ASP assumes No Warranty liability in connection with this KENT Zoom Turbo Vacuum Cleaner other than that specified herein. This Warranty is in lieu of all other warranties, expressed or implied, including warranties of fitness for a particular purpose. KENT or its ASP does not authorise any person or representative to assume for them any other obligations on the sale of this KENT Zoom Turbo Vacuum Cleaner.
14. Under no circumstances, the liability of KENT or its ASP shall exceed the value of the product.
15. Under no circumstances are the terms mentioned above negotiable and no employee of KENT or its ASP has the authority to supersede them.